



★★★★★

Exclusive

Mobile Homes

www.vitolina-homes.com



first
coffee

Exclusive Mobile Homes

INTRODUCTION

We are building mobile houses that are meant especially for pleasure and relaxing. They are a perfect choice to run away from everyday stress. Mobile houses are constructed for people of all ages, who want to spend a cosy and comfortable time in nature. Mobile houses can be delivered and placed wherever you wish, e.g. on the coast, on the hill or in the forest. They are built from high-quality materials; they have a strong structure, high stability and they are energy-efficient. One of the biggest advantages of a mobile home is that there is no need of any building permissions. Mobile houses are designed so that they totally exploit the internal space. The look of the house is extremely attractive, modern, with sharp lines. The model of the house can be chosen from our standard ones, or we can design it according to your wishes. All of the internal doors are sliding doors as they are built in the walls, which allows you to float from room to room more easily. In the summer the heat pump will cool down the house and in the winter, it will warm it. We design, deliver and build your own mobile house in a very short period of time..



LIVING ROOM

Spacious main area is composed of a living room, kitchen and dining room. It is perfect for cooking, dining with family and friends, for relaxing in the evening or morning coffee break. The equipment in the main area contains a multifunctional sofa (that is also expandable into a double bed), a club table, kitchen's cupboards, dining table and chairs. All the rooms in the mobile house are functionally placed so that the space is maximally exploited.







12

13

AUFBAU

TECHNICAL DATA	<i>M Exclusive</i>	<i>L Exclusive</i>	<i>L1 Exclusive</i>	<i>XL Exclusive</i>
Length	6 m	9 m	10 m	9 m
Width	4 m	4 m	4 m	7 m
Ceiling height	2,3 m	2,3 m	2,3 m	2,3 m
Surface area	24 m ²	36 m ²	40 m ²	48 m ²
Beds	1 + 1	2 + 1	2 + 1	3 + 1
Bedrooms	1	2	2	3
Bathrooms	1	2	2	3
Capacity	2 + 2 Persons	4 + 2 Persons	4 + 2 Persons	6 + 2 Persons
Terrace	6 x 3, 18 m ²	6 x 3, 18 m ²	7 x 3, 21 m ²	5 x 3, 15 m ²

Exterior

EXTERIOR WALLS

- galvanized metal structure covered two-sided with 20 mm Vitocel insulation plates
- sound and thermal insulation 50-100 mm
- top layer/final coat 2 mm

ROOF

- flat with attica
- galvanized metal structure
- Osb plates 22 mm
- sound and thermal insulation 100 mm
- roof rubber
- aluminium rims and drains

FLOOR

- galvanized metal structure covered two-sided with 22 mm Osb plates
- sound and thermal insulation 100 mm
- special protective coating against moisture
- galvanized metal chassis
- legs for levelling the ground

TERRASE/PATIO

- metal structure
- plastic battens
- legs for levelling the ground

Interior

INTERNAL WALLS

- galvanized metal structure covered two-sided with 20mm Vitocel insulation plates
- sound insulation 50 mm
- built-in sliding doors
- painted walls

CEILING

- flat
- galvanized metal structure covered with 20mm Vitocel insulation boards
- painted

FLOOR

- vinyl flooring

LIVING ROOM

- sofa
- club table
- dining table
- dining chairs,
- kitchen's cupboards
- washing sink,
- electric oven
- microwave oven,
- refrigerator ,
- electric stove
- kitchen ventilation (built in)
- washer
- LCD television

BATHROOM

- shower cabin
- toilet
- sink with a closet
- washing machine

BEDROOM

- wardrobe closet
- bed
- mattresses,
- slatted mattress frame,
- lights
- shelves
- lcd television

SLIDING DOORS (that open inside the walls), FLYSCREENS, PLEATED BLINDS, FAUCETS, AIR CONDITIONING, WASHING MACHINE, ELECTRICITY 230V, KITCHEN LIGHT, CABLE TELEVISION, CEILING LIGHTS





Vitolina | **M** *Superior*

24 m²

Dimensions:
4000 x 6000 mm

Terrace 18 m²

2  + 2 



Vitolina | **L** *Modern*

36 m²

Dimensions:
4000 x 9000 mm

Terrace 18 m²

4  + 2 



Vitolina | **L1** Premium

40 m²

Dimensions:
4000 x10000 mm

Terrace 21 m²

4  + 2 



Vitolina | **XL** Premium

48 m²

Dimensions:
7000 x 9000 mm

Terrace 15 m²

6  + 2 

GROUND FLOOR

Vitolina | M

24 m²

Terrace 18 m²

2  + 2 

Dimensions: 4000 x 6000 mm

Kitchen: 1
Bedroom: 1
Bathroom: 1



Vitolina | L

36 m²

Terrace 18 m²

4  + 2 

Dimensions: 4000 x 9000 mm

Kitchen: 1
Bedroom: 2
Bathroom: 2



Vitolina | L1

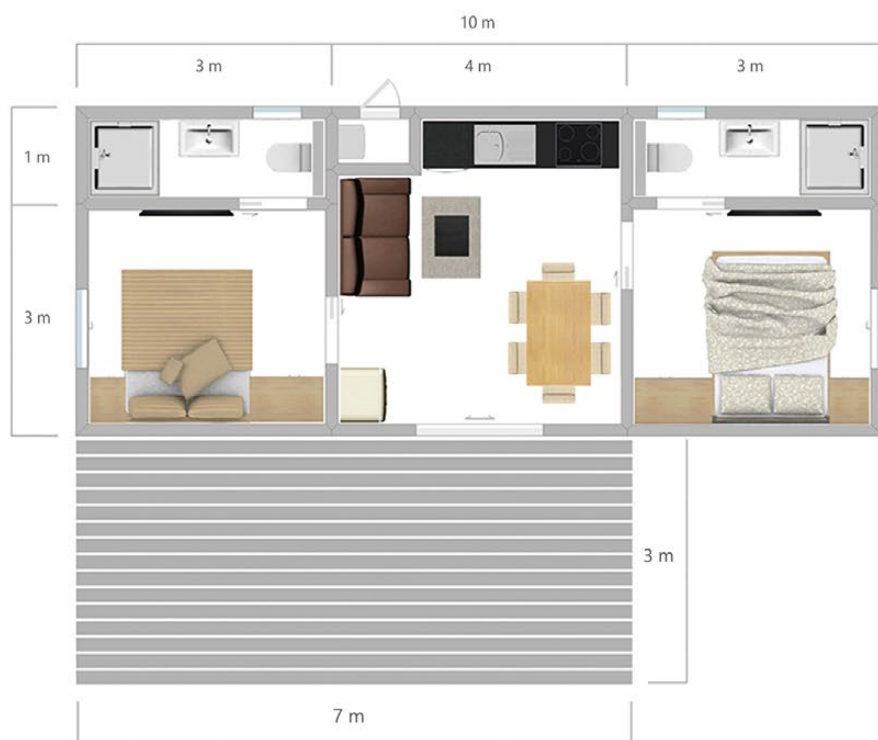
40 m²

Terrace 21 m²

4  + 2 

Dimensions: 4000 x 10000 mm

Kitchen: 1
Bedroom: 2
Bathroom: 2



Vitolina | XL

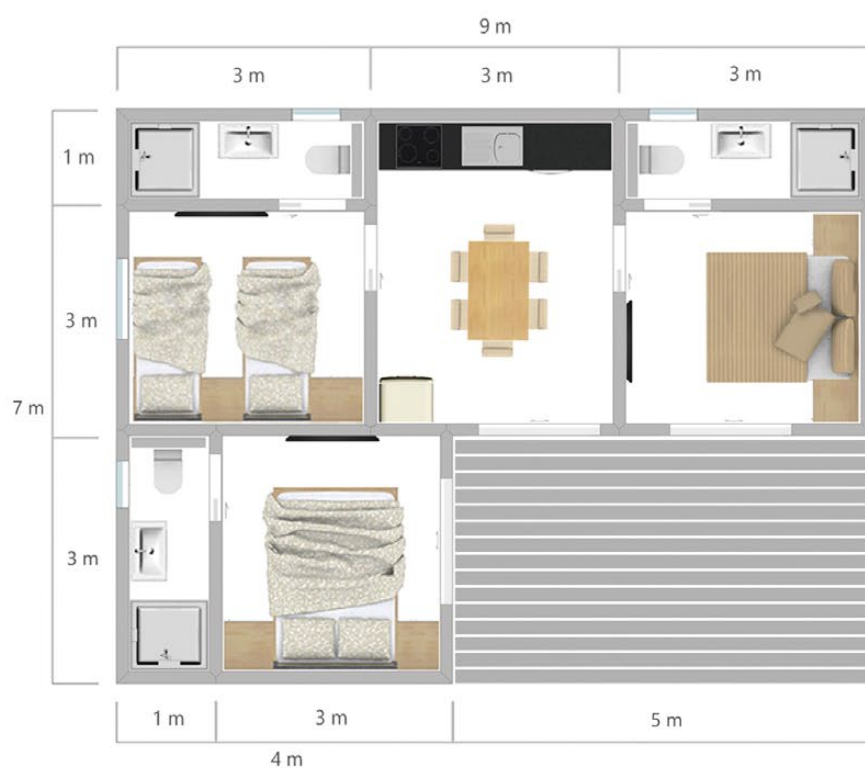
48 m²

Terrace 15 m²

6  + 2 

Dimensions: 7000 x 9000 mm

Kitchen: 1
Bedroom: 3
Bathroom: 3







LOVE
MAKES A HOUSE
A HOME

Vitolina | *Superior*

High quality materials and standards in the development of mobile homes





Projects *2018*





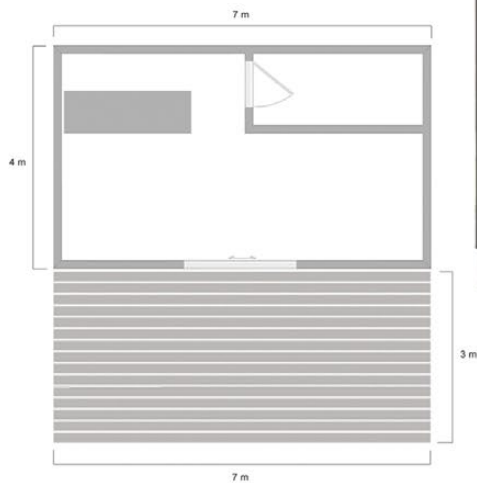
Camping Terme Jezerčica (*Donja Stubica, Croatia*) - **15 Mobile Houses**

Camping Smoljanac (*Plitvička jezera, Croatia*) - **17 Mobile Houses**

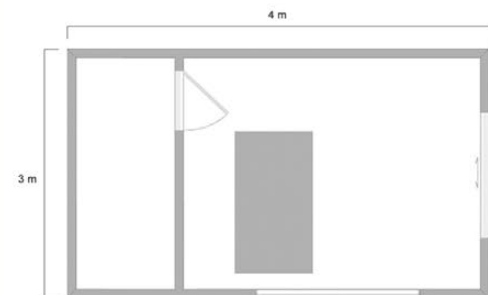


VITOLINA Business

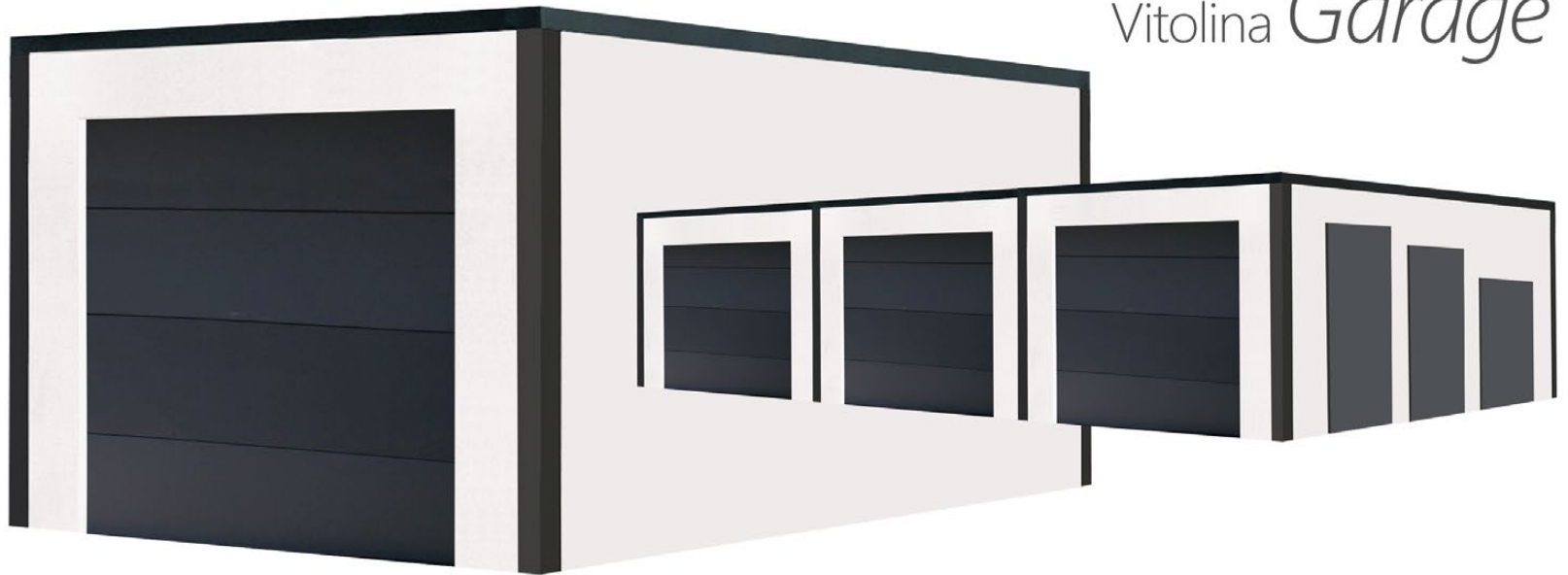
Business L | 28 m² + ter. 21 m²



Business S | 12 m²



Vitolina *Garage*



Vitolina *Pavilion*





Mobile Homes
VITOLINA



www.vitolina-homes.com

✉ info@vitolina.com

 Vitolina Mobile Homes